

PART OF SECTION 10, T.6N., R.1E., S.L.B. & M.  
**SPURLOCK SUBDIVISION PLAT 1**

LOTS 1 - 5 AND 16 - 23

IN WEBER COUNTY

SCALE 1" = 100'

TAXING UNIT: 317

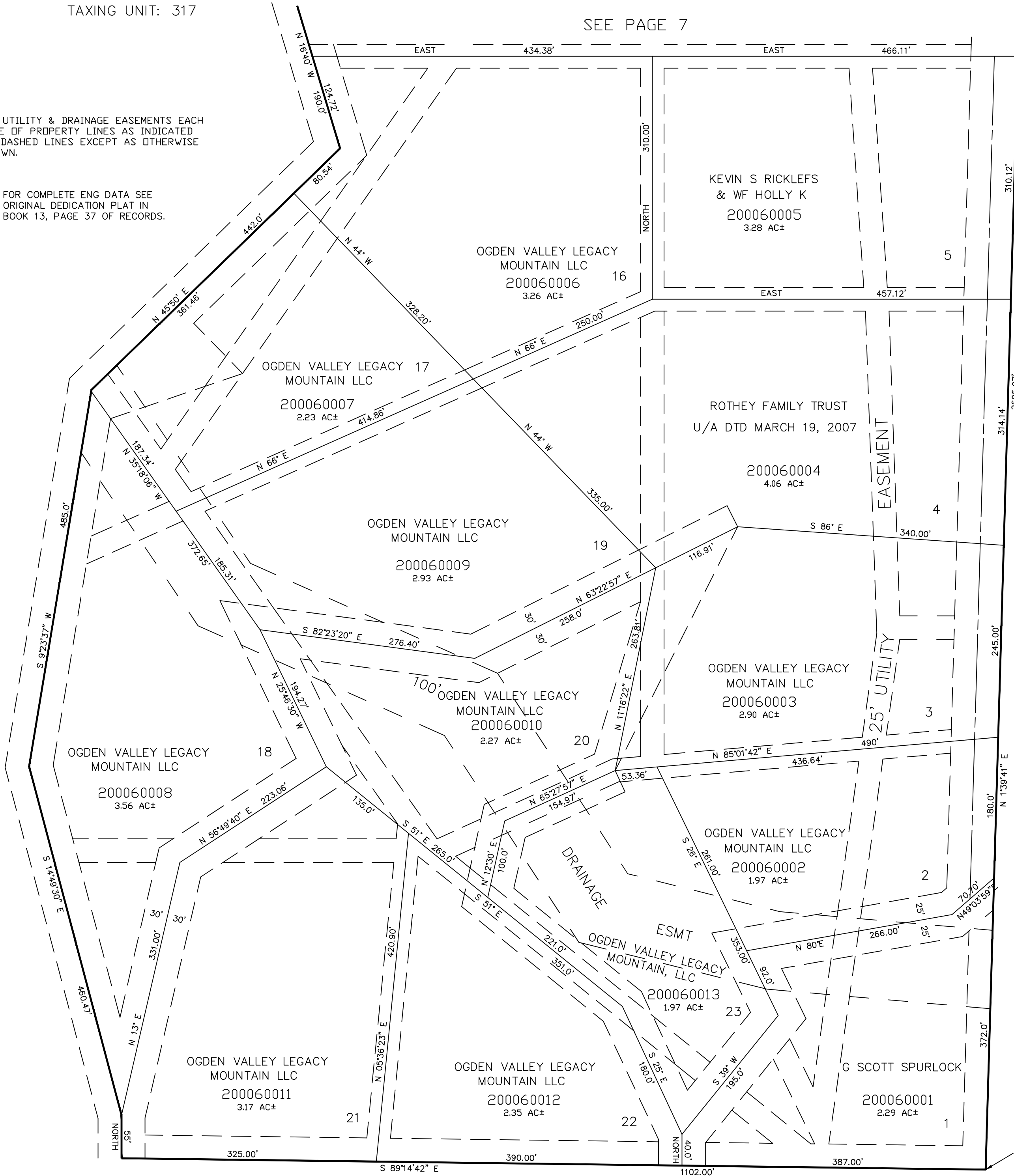
SEE PAGE 7

30' UTILITY & DRAINAGE EASEMENTS EACH SIDE OF PROPERTY LINES AS INDICATED BY DASHED LINES EXCEPT AS OTHERWISE SHOWN.

FOR COMPLETE ENG DATA SEE ORIGINAL DEDICATION PLAT IN BOOK 13, PAGE 37 OF RECORDS.

SEE PAGE 5

SEE PAGE 5-1



S. 1/4 COR. SEC. 10, T.6N., R.1E., S.L.B. & M.